

# Tavira

8009.01 - 8009.16



product  
**Curtain**

description  
**Dim out, tweed-type look and feel**

composition  
**100% flame retardant polyester**

width  
**± 300 cm, ± 118 inches**

weight  
**± 906 gr/m<sup>2</sup>, ± 29 oz/yd<sup>1</sup>**

visual & thermal comfort  
**EN 410/EN 14501**

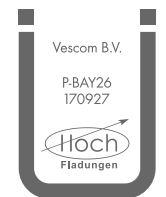
Test available  
**AATCC 148**  
Test available

flame retardant  
**NFPA 701 (meth. 1 or 2) , Pass**  
**EN 13773 , Class 1**  
**BS 5867-2 , Type B**  
**NF P 92/503-507 , M1**  
**DIN 4102 , B1**  
**Übereinstimmung , Pass**  
**UNI VF 8456-8457 , Classe 1**  
**CAN/ULC S109 , Pass**  
**IMO 2010 FTP part 7 , Pass**

colorfastness crocking  
**AATCC 8 (solids)**  
wet 5 (scale 1-5) / dry 4-5 (scale 1-5)

colorfastness to light  
**ISO 105-B02**  
6 (scale 1-8)  
**AATCC 16.2 option 1 or 16.3 opt 3**  
4 (scale 1-5)

labels



Baustoffklasse schwerentflammbar  
DIN 4102, B1

care



Shrinkage

Shrinkage 30° - warp -1.5%  
Shrinkage 30° - weft -0.5%  
Shrinkage 70° - warp -2.0%  
Shrinkage 70° - weft -0.5%

# Tavira

8009.01 - 8009.16

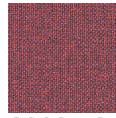
---



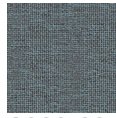
8009.01



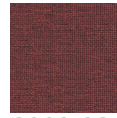
8009.11



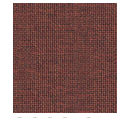
8009.10



8009.09



8009.08



8009.07



8009.06



8009.05



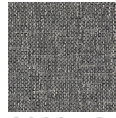
8009.04



8009.03



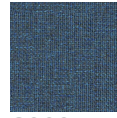
8009.02



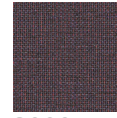
8009.12



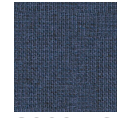
8009.13



8009.14



8009.15



8009.16